

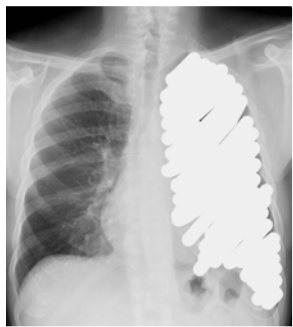
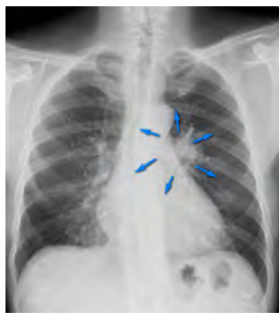


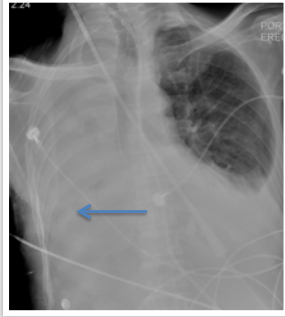
Atelectasis and collapse

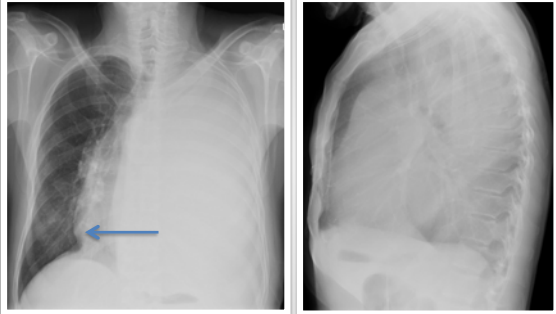
Entire lung vs. effusion

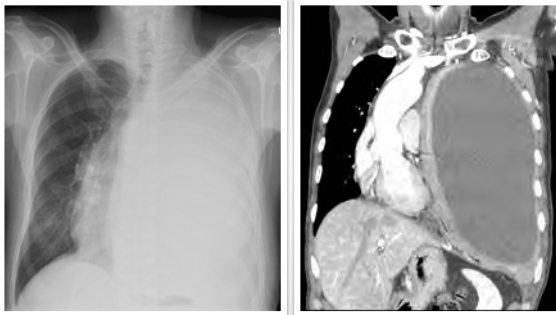
What will I gain from this video?

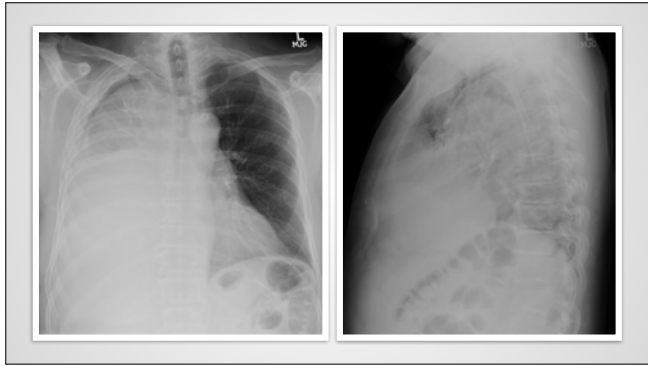
After watching this video, you will know how to distinguish between the “white out” caused by the collapse of a lung and the “white out” caused by a pleural effusion.



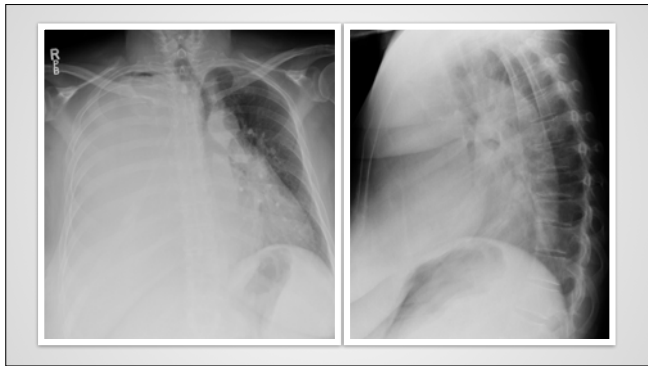


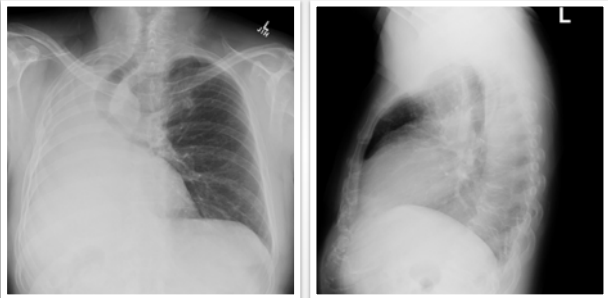












Always check the position of the mediastinum.

Pleural effusion—shift of mediastinum away from effusion.

Collapse—shift of mediastinum to side of collapse.

Frequently caused by combination of collapse and effusion.
